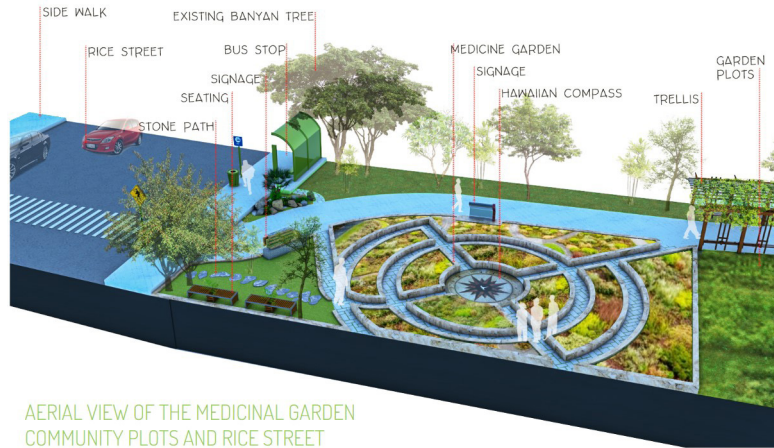
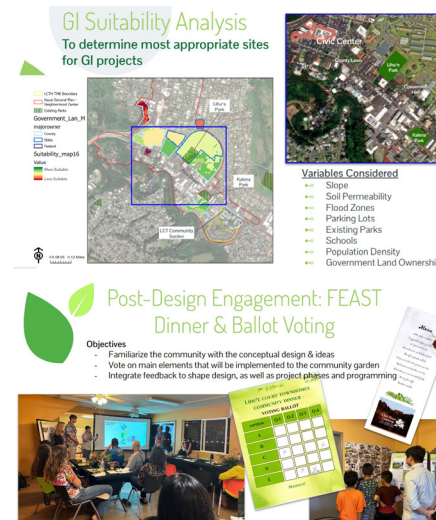


LĪHU'E PLACEMAKING, FORESTRY, & GARDENS INITIATIVE; USING GREEN INFRASTRUCTURE TO STRENGTHEN COMMUNITY CONNECTIONS

MEDICINAL GARDEN - 3D VISUALIZATION



AERIAL VIEW OF THE MEDICINAL GARDEN
COMMUNITY PLOTS AND RICE STREET



Lisa Webster, Alice Terry, Jakob Thelle, Kinzang Dorji & Henrik Weiberg

The Līhu'e Placemaking, Forestry & Gardens Initiative is a two-year effort to build valued community green spaces in Līhu'e and develop a shared vision for future green infrastructure (GI) along Rice Street. The project is being spearheaded by the Rice Street Business Association and Better Block Hawai'i, with support from the County of Kaua'i Office of Economic Development. This work is being supported by funding received through the 2022 AARP Community Challenge Grant (provided by AARP Hawai'i) and the 2022-2024 Project for Places Grant (provided by the Funders Network), with match funds provided by the Ulupono Initiative.

As part of the Līhu'e Placemaking, Forestry & Gardens Initiative, a team of five students in the Spring 2023 Planning Practicum course in the Department of Urban and Regional Planning (DURP), University of Hawai'i at Mānoa, were given the opportunity to provide conceptual designs showcasing community garden and placemaking improvements at the Līhu'e Court Townhomes (LCT), an affordable housing development located in the heart of Līhu'e along Rice Street. The students traveled to Kaua'i twice during the semester and had the opportunity to conduct research and facilitate stakeholder engagement to inform both LCT improvements and a shared vision for GI in Līhu'e.