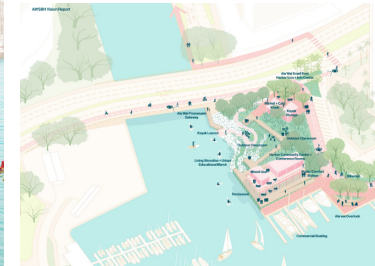
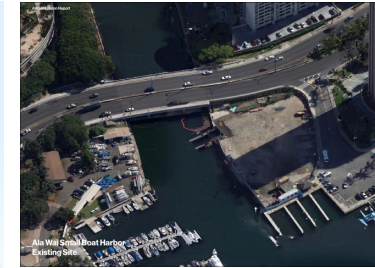
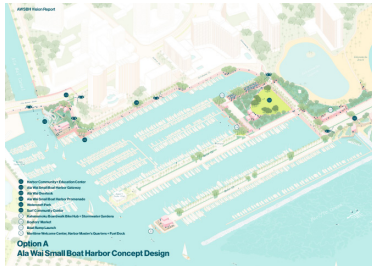
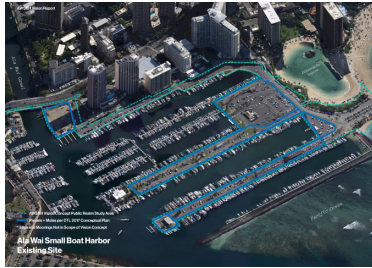


# ALA WAI SMALL BOAT HARBOR VISION REPORT



Division of Boating and Ocean Recreation, DLNR & University of Hawai'i Community Design Center  
Phoebe White, Assistant Professor of Landscape Architecture, School of Architecture  
Priyam Das, Associate Professor and Chair, Department of Urban and Regional Planning

The Ala Wai Small Boat Harbor (AWSBH) Vision highlights its watercraft legacy in efforts to create a model for a resilient coastal public space. The concept features three overarching principles – connect the coast, amplify watercraft legacy, and catalyze coastal ecologies. These foreground everyday harbor functions while allowing its spaces, supported by critical infrastructure, to be adaptable for long-term sea level rise.

A multi-modal promenade serves as the primary connective fabric. It provides activity nodes with wayfinding elements, watercraft amenities, food, mixed-use, and public comfort stations. Adaptive strategies include four types of plant communities (urban marsh habitat, coastal strand, riparian/stormwater, and lawn), living shorelines for stabilization, elevated structures in zones impacted by three feet of sea level rise, and a living seawall to protect the edges.

The design considers findings from community engagement before and after generating the concepts to enhance harbor functions, and make them accessible for all. Previous workshops indicate that memories of the AWSBH coalesce around two themes: i) an ocean-based lifestyle – learning to surf, spending time at the yacht clubs, sailing, boating, fishing, and swimming; and ii) gathering for events or spending time with friends and family – watching the sunset and fireworks, BBQs, the annual Transpac race, and the homecoming of Hōkūle'a. These themes informed the AWSBH Vision shared with stakeholder focus groups to elicit feedback.