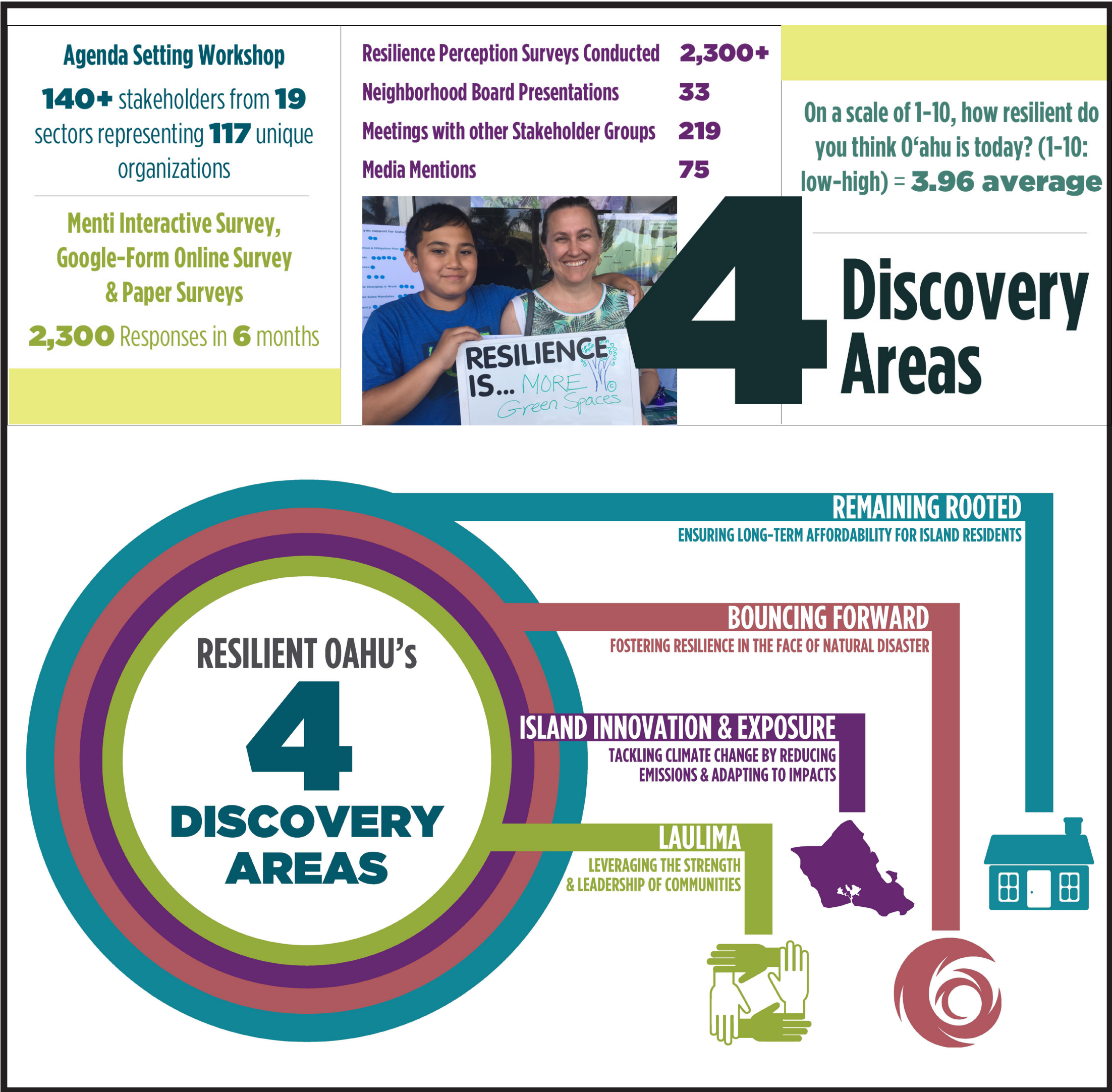


RESILIENCE STRATEGY

PRELIMINARY RESILIENCE ASSESSMENT



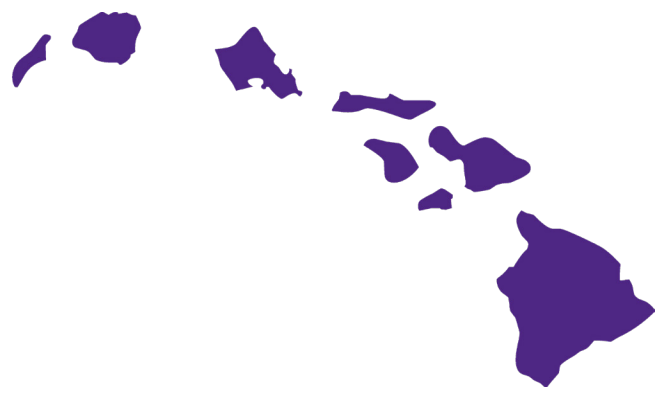
City & County of Honolulu Office of Climate Change, Sustainability and Resiliency

The City and County of Honolulu Office of Climate Change, Sustainability and Resiliency (CCSR) was established by City Charter in November 2016 with overwhelming approval by O'ahu voters. Several months prior, Honolulu was selected to join the 100 Resilient Cities (100RC) network (Pioneered by the Rockefeller Foundation). Among its many obligations as described in the City Charter, the office is tasked with tracking climate change science and potential impacts, coordinating actions and policies of departments within the city to increase community resilience and develop resilient infrastructure in response to the effects from climate change. Additionally, CCSR is tasked with integrating sustainable and environmental values into city plans, programs, and policies. The award from 100RC requires the hiring of a Chief Resilience Officer (CRO) and the development of a *Resilience Strategy* to address identified acute shocks and chronic stresses that challenge the city.

As a new office with a new initiative, CCSR needed to both introduce the office and quickly solicit input toward the *Resilience Strategy* – this phase was the *Preliminary Resilience Assessment (PRA)*. This required a concerted public outreach and education effort, as well as, internal government exploration and sharing of how the resources and opportunities of 100RC and CCSR benefits planning and practice.

The PRA engagement period ran from September 2017-April 2018 and represents a snapshot of actions, perceptions, and further defined questions with respect to O'ahu's resilience. This moment-in-time assessment, or pulse on resilience, provides a baseline understanding of O'ahu's resilience strengths and weaknesses, and highlights new learnings, insights and questions regarding risks and opportunities that warrant further examination. Perceptions inputs help to: (1) understand O'ahu's resilience strengths and weaknesses as perceived from diverse perspectives; (2) identify and catalogue issues relevant to O'ahu's resilience work; (3) understand where there is consensus and dissonance on resilience threats and opportunities; and (4) capture and organize a large number of stakeholder perceptions.

In total, more than 2300 individuals provided input of perceptions and actions to address challenges. During the peak of engagement from October 2017-March 2018, CCSR averaged greater than 1 engagement activity per day. Engagements included one-on-one meetings/interviews, neighborhood board presentations and surveys, other in-person presentations and surveys, panels and/or media engagement, and an on-line survey and social media promotion. The jury felt that the process of engaging diverse voices around these challenging topics helps to inform the public about the complexity of planning issues and the benefits of planning in developing a more resilient community.



2 0 1 8 A P A A W A R D S P R O G R A M
H A W A I I C H A P T E R



S p o n s o r e d b y
H o n B l u e

PUBLIC EDUCATION & OUTREACH AWARD